

CERTIFICATE OF LOCATION OF GOVERNMENT CORNER

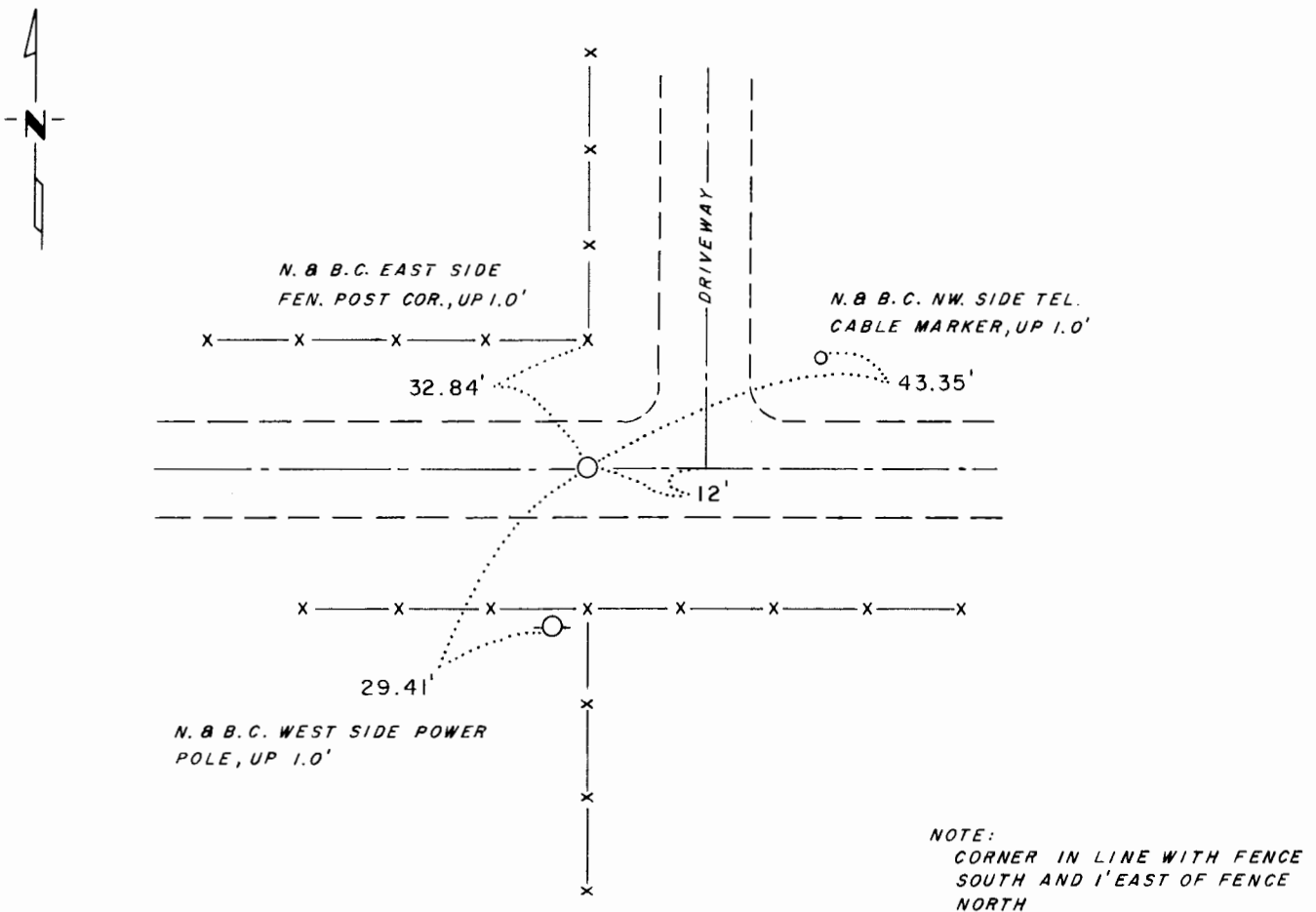
North Quarter Corner of Section 9, Township 105, Range 41, 5th. P.M.

STATE OF MINNESOTA, County of MURRAY

At the corner location shown on the sketch:

- On _____ found a _____
DATE
- left monument as found, lowered monument, removed monument (explain)
- On 9-22-77 placed a 1/2" x 13" Iron Pipe, Down 0.2'
DATE

SKETCH OF REFERENCE TIES



Statement of evidence relative to this corner location is on back of page.

I hereby certify that this document and the data contained herein was prepared by me or under my direct supervision.

Sandy H. Stevenson 7-3-78
SIGNATURE DATE

Registration No. 12684

- Land Surveyor, Professional Engineer
- County Surveyor, County Engineer

OFFICE OF THE REGISTER OF DEEDS

County of _____

I hereby certify that this document was filed in the Reg. of Deeds office at _____ .M. on the _____ day of _____ A.D., 19 _____

Register of Deeds _____

By _____, Deputy

DOCUMENT NO. _____

Statement of Evidence:

North Quarter Corner Section 9, T 105 R 41

This corner was originally established by the U.S. General Land Office survey in 1861. The government notes show corner marked with a wood post set in mound of earth with pits and trench dug around the mound.

In May, 1977 the DNR Bureau of Engineering contacted the Murray County Offices of the Recorder, Auditor and Engineer for corner information.

The Engineer's personnel did a survey in the southeast quarter section 4 using this corner for their description. They said they had found a stone at this corner, but they couldn't find the ties to it.

On May 24, 1977 the DNR checked with metal locator for this corner, but didn't find anything. We checked with the County Highway Department again in June, but they still couldn't find the ties. We checked with the metal locator again and found a spike 3' west of the fence south and 2.5' north of the centerline of road.

On June 21, 1977 we hired Sidney Pope to dig for this corner with his backhoe. We dug 10' north-south by 16' east-west by 3' deep hole at the intersection of centerline road and fence line south without finding anything. We accepted the centerline of the east-west road and the old fence line south as the obliterated position for this corner.

On September 22, 1977 we set a 1/2" x 13" iron pipe for the corner and took ties.

SS

164263

State of Minnesota }
County of Murray, }

I hereby certify that the within instrument
was filed in this office for record on the

7th day of August A.D. 19 81,

at 8:30 o'clock A. M., and was duly re-

corded as Microfilm Document No. 164269

Willard W. Ohme
County Recorder